

WAKEFIELD

EX
EX-STOCK

PTO
PAINT TO ORDER
10 WORKING DAYS

CMS
COLOUR MATCH SERVICE
20 WORKING DAYS

MTO
MADE TO ORDER SANDED
15 WORKING DAYS

MTO
MADE TO ORDER PAINTED
20 WORKING DAYS



EX EX-STOCK

PTO PAINT TO ORDER

	WHITES/CREAMS	BEIGES	BLUES	GREENS	GREYS	PINKS/PURPLES
Sanded Ash	Brilliant White	Shell	Pantry Blue	Cardamom	Gun Metal Grey	Cashmere
Light Oak		Stone Grey	Airforce	Light Teal	Graphite	Vintage Pink
Porcelain		Lava	Parisian Blue	Viridian		Lavendar Grey
Ivory			Slate Blue	Deep Forest		Deep Heather
Mussel						CMS Colour Match Service
Light Grey						
Sage Green						
Stone						
Dust Grey						
Marine						

DOOR SPECIFICATION

Description	Shaker - 5 piece solid frame with internal bead	
Finish	Oak	Painted
	Oak	Ash painted any standard colour or sanded
Frame material	Oak	Ash
Centre panel material	Oak veneer	Ash veneer
Door thickness	20mm	
Frame width	93mm	
Edge colour	Oak	As face
Reverse colour	Oak	As face

MFC board options are available for most of our ranges. Please refer to page 128 in the Technical section for further information.

STANDARD DRAWERFRONTS & DOORS

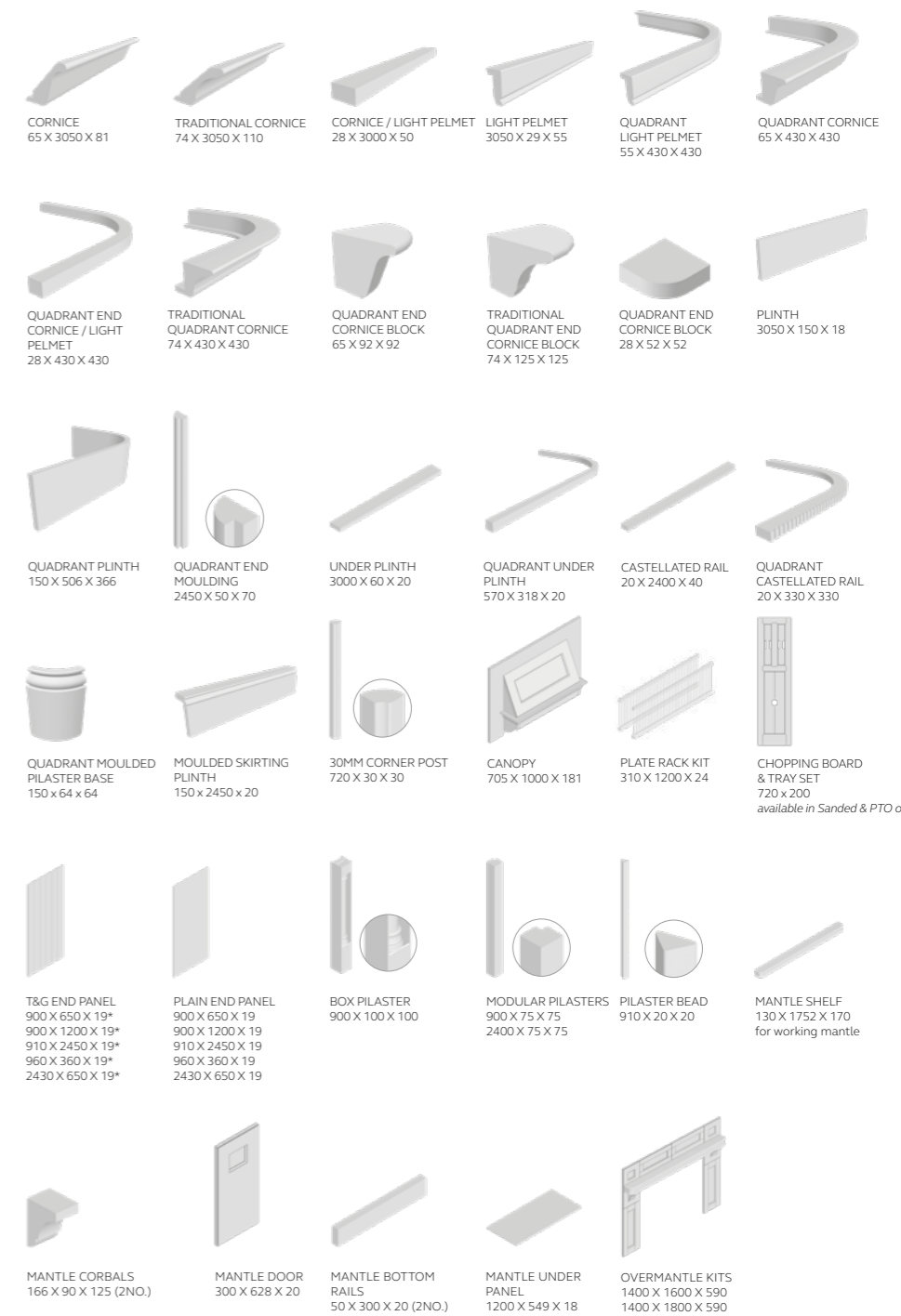
- 115 x 597 slab
- 140 x 297 slab
- 140 x 397 slab
- 140 x 447 slab
- 140 x 497 slab
- 140 x 597 slab
- 140 x 797 slab
- 140 x 897 slab
- 140 x 997 slab
- 175 x 397 slab
- 175 x 497 slab
- 175 x 597 slab
- 283 x 497
- 283 x 597
- 283 x 797
- 283 x 897
- 283 x 997
- 355 x 497
- 355 x 497 plain frame
- 355 x 597
- 355 x 797
- 355 x 897
- 355 x 997
- 450 x 597
- 495 x 397
- 495 x 597
- 570 x 297
- 570 x 397
- 570 x 447
- 570 x 497
- 570 x 597
- 645 x 597
- 715 x 147 slab
- 715 x 257
- 715 x 297
- 715 x 273
- 715 x 273 pair
- 715 x 315
- 715 x 315 pair
- 715 x 320 quadrant door
- 715 x 347
- 715 x 397
- 715 x 397 georgian frame
- 715 x 397 plain frame
- 715 x 447
- 715 x 497
- 715 x 497 plain frame
- 715 x 497 georgian frame
- 715 x 547
- 715 x 597
- 895 x 297
- 895 x 347
- 895 x 397
- 895 x 447
- 895 x 497
- 895 x 497 georgian frame
- 895 x 597
- 980 x 597
- 1060 x 497 georgian frame
- 1245 x 297
- 1245 x 397
- 1245 x 447
- 1245 x 497
- 1245 x 597

STANDARD DOORS

SPECIAL SIZES ARE AVAILABLE MADE TO ORDER. PLEASE REFER TO THE CURRENT PRICE LIST FOR (h) & (w) LIMITATIONS.



STANDARD ACCESSORIES



*The T&G grooving and the timber grain run up and down the panel height.

EX **PTO** **CMS**

EX **PTO** **CMS**

MTO
MADE TO ORDER
SANDED
15
WORKING DAYS

MTO
MADE TO ORDER
PAINTED
20
WORKING DAYS

ORDER ONLINE | TEL: 028 7965 1650
UFORM.CO.UK | FAX: 028 7965 1652



MTO SANDED	MTO STAIN TO ORDER	MTO PAINT TO ORDER	WHITES/CREAMS	BEIGES	BLUES	GREENS	GREYS	PINKS/PURPLES
Sanded Ash	Light Oak	Brilliant White	Shell	Pantry Blue	Sage Green	Light Grey	Cashmere	
		Porcelain	Stone	Airforce	Cardamom	Dust Grey	Vintage Pink	
		Ivory	Stone Grey	Parisian Blue	Light Teal	Gun Metal Grey	Lavendar Grey	
		Mussel	Lava	Marine	Viridian	Graphite	Deep Heather	
			Slate Blue	Deep Forest				

CMS Colour Match Service

DOOR SPECIFICATION

Description	Shaker - 5 piece solid frame with internal bead	
	Oak	Painted
Finish	Oak	Ash painted any standard colour or sanded
Frame material	Oak	Ash
Centre panel material	Oak veneer	Ash veneer
Door thickness	20mm	
Frame width	93mm	
Edge colour	Oak	As face
Reverse colour	Oak	As face

MFC BOARD MATCHES

A wide range of matching MFC boards are listed in our current price list.

Please note these are suggested board matches only. We strongly recommend that you view samples before making your selection.

MADE TO ORDER DRAWERFRONTS & DOORS

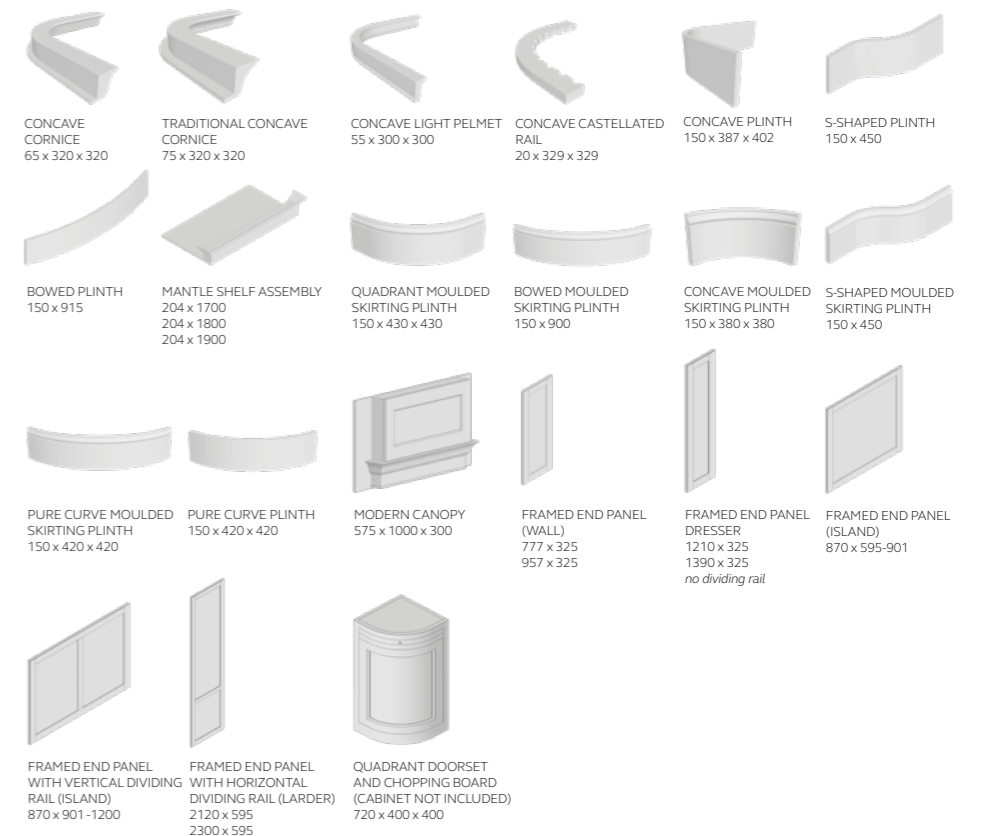
door	450 x 497 495 x 497 570 x 347 895 x 273 895 x 547 1060 x 497 1060 x 597 1245 x 347
double glazed door	715 x 397 715 x 447 715 x 497 895 x 397 895 x 447 895 x 497 1060 x 397 1060 x 447 1060 x 497
single glazed door	715 x 397 715 x 447 715 x 497 895 x 397 895 x 447 895 x 497 1060 x 397 1060 x 447 1060 x 497
single georgian glazed door	715 x 397 715 x 447 715 x 497 895 x 397 895 x 447 895 x 497 1060 x 397 1060 x 447 1060 x 497
double panel door (top panel height 222mm)	715 x 397 715 x 447 715 x 497 895 x 397 895 x 447 895 x 497 1060 x 397 1060 x 447 1060 x 497
gothic carved frame	715 x 447 715 x 497 895 x 447 895 x 497 1060 x 447 1060 x 497 1245 x 447 1245 x 497
cathedral carved frame	715 x 447 715 x 497 895 x 447 895 x 497 1060 x 447 1060 x 497 1245 x 447 1245 x 497
damascus carved frame	715 x 447 715 x 497 895 x 447 895 x 497 1060 x 447 1060 x 497 1245 x 447 1245 x 497
edwardian carved frame	715 x 447 715 x 497 895 x 447 895 x 497 1060 x 447 1060 x 497 1245 x 447 1245 x 497
bowled 2 pan drawer line set (1x140 x 897, 2 x 283 x 897)	715 x 897
bowled 2 pan drawer line set (2 x 355 x 897)	715 x 897
concave door for wall unit (internal R200)	715 x 897
concave door for wall unit (internal R200)	895 x 300 x 300
concave door for base unit (internal R200)	715 x 300 x 300
s-shape door for base unit	715 x 450

MADE TO ORDER DOORS

SPECIAL SIZES ARE AVAILABLE MADE TO ORDER. PLEASE REFER TO THE CURRENT PRICE LIST FOR (h) & (w) LIMITATIONS.



MADE TO ORDER ACCESSORIES





SPECIAL SIZES ARE AVAILABLE MADE TO ORDER, PLEASE SEE (h) & (w) LIMITATIONS PROVIDED WHERE APPLICABLE.
GLASS IS NOT SUPPLIED WITH SPECIAL SIZE FRAMES.

AVAILABLE
 NOT AVAILABLE

MAX & MIN SIZES

	H \ W	147	297	397	447	497	547	597	697	797	897	997	1097	1197
SLAB DRAWERFRONTS	90	✓	✓	✓	✓	✓	✓	✓	✓	✓	✓	✓	✓	✓
	140	✓	✓	✓	✓	✓	✓	✓	✓	✓	✓	✓	✓	✓
	175	✓	✓	✓	✓	✓	✓	✓	✓	✓	✓	✓	✓	✓
PAN DRAWERS	255	-	✓	✓	✓	✓	✓	✓	✓	✓	✓	✓	✓	✓
	283	-	✓	✓	✓	✓	✓	✓	✓	✓	✓	✓	✓	✓
	355	-	✓	✓	✓	✓	✓	✓	✓	✓	✓	✓	✓	✓
DOORS Minimum door width 220mm	450	-	✓	✓	✓	✓	✓	✓	✓	-	-	-	-	-
	490	-	✓	✓	✓	✓	✓	✓	✓	-	-	-	-	-
	570	-	✓	✓	✓	✓	✓	✓	✓	-	-	-	-	-
	715	-	✓	✓	✓	✓	✓	✓	✓	-	-	-	-	-
	895	-	✓	✓	✓	✓	✓	✓	✓	-	-	-	-	-
	1060	-	✓	✓	✓	✓	✓	✓	✓	-	-	-	-	-
	1245	-	✓	✓	✓	✓	✓	✓	✓	-	-	-	-	-
	1465	-	✓	✓	✓	✓	✓	✓	✓	-	-	-	-	-
	1965	-	✓	✓	✓	✓	✓	✓	✓	-	-	-	-	-
	2250	-	✓	✓	✓	✓	✓	✓	✓	-	-	-	-	-

Door heights over 1465 will have a dividing rail as standard.

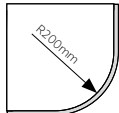
Please note: As standard, the dividing rail will be centred horizontally on the door. If you require an alternative position you must specify this when placing your order.

Door heights over 1965 will have 2 dividing rails equally spaced.

MAX & MIN SIZES

PLAIN FRAMES	H \ W	255	297	397	447	497	597	697
Glass is not included when ordering special sizes. Plain Frames over 1465 are not available as they would require a horizontal centre rail and therefore would no longer be defined as a Plain Frame.	283	✓	✓	✓	✓	✓	✓	✓
	355	✓	✓	✓	✓	✓	✓	✓
	570	✓	✓	✓	✓	✓	✓	✓
	715	✓	✓	✓	✓	✓	✓	✓
	895	✓	✓	✓	✓	✓	✓	✓
	1060	✓	✓	✓	✓	✓	✓	✓
	1245	✓	✓	✓	✓	✓	✓	✓
	1465	✓	✓	✓	✓	✓	✓	✓

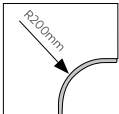
MAX & MIN SIZES

QUADRANT DOORS	H \ W	320
	570	✓
	715	✓
	895	✓
	980	✓
	1060	✓
	1245	✓

MAX & MIN SIZES

FEATURE FRAMES & DOORS	H \ W	297	397	447	497	597	697
Georgian: Number of panes depends on width. Due to manufacturing restrictions, all other styles of feature frames & doors will be priced on request. Glass: Glass is not included with special sizes.	355	✓	✓	✓	✓	✓	✓
	570	✓	✓	✓	✓	✓	✓
	715	✓	✓	✓	✓	✓	✓
	895	✓	✓	✓	✓	✓	✓
	1060	✓	✓	✓	✓	✓	✓
	1245	✓	✓	✓	✓	✓	✓
	1465	✓	✓	✓	✓	✓	✓

MAX & MIN SIZES

CONCAVE DOORS	H \ W	320
	570	✓
	715	✓
	895	✓
	980	✓
	1060	✓
	1245	✓